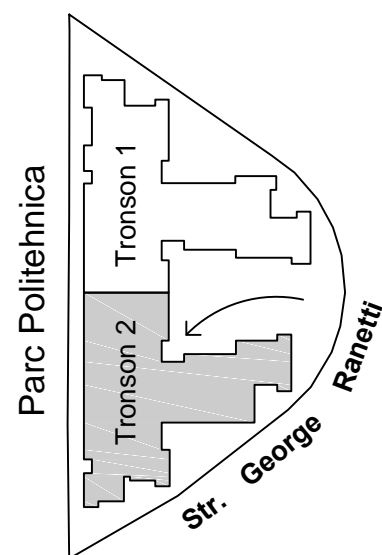
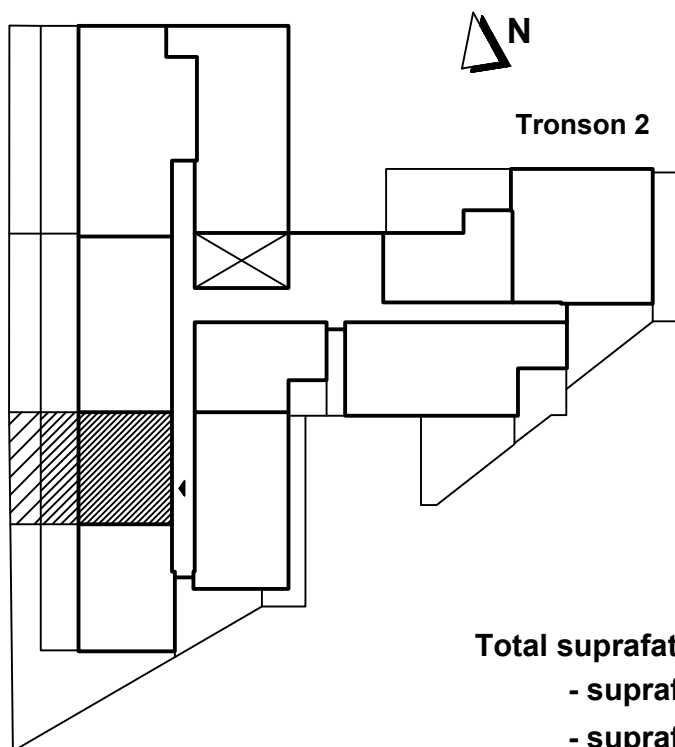


Apartament 2 camere - 2004, parter, tronson 2 Str. George Ranetti, Nr. 2-8, Sector 6



Total suprafata construita apartament = 92.30 mp, din care:

- suprafata construita terasa = 20.90 mp
- suprafata construita gradina = 19.00 mp

Total suprafata utila apartament = 63.90 mp

